

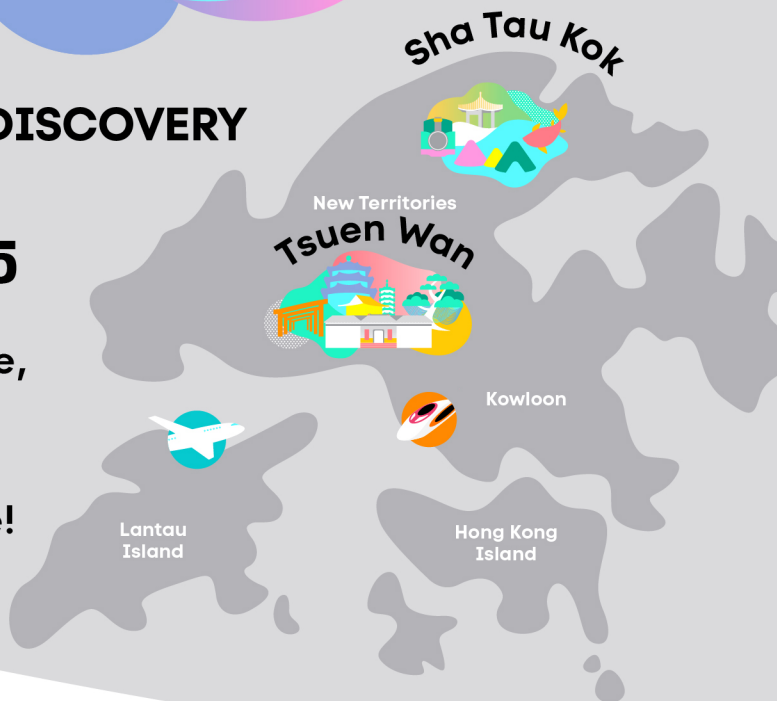
#ddHK design district  
Hong Kong  
設計埠香港地

荃灣 · 沙頭角  
TSUEN WAN · SHA TAU KOK

CREATIVE JOURNEY · INFINITE DISCOVERY  
遊台創意 × 探索無限

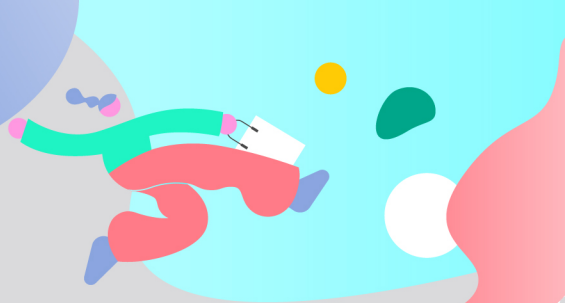
12.12.2024 — 14.2.2025

Explore the captivating blend of culture,  
heritage and nature in two enchanting  
Hong Kong neighbourhoods through  
placemaking and activities that inspire!



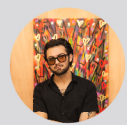
A Series of Activities  
Filled with Local Flavour

- Placemaking • Crossovers with Attractions • Themed Guided Tours • Cultural Workshops
- Seaside Weekend Market • Eco-Art Festival  
and many more exciting activities...



## New Travel Experiences through Design and Creativity

### Collaborating Creative Units



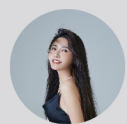
**Coolman Coffeedan**  
Animation artist, USA



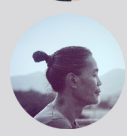
**ENES**  
Interactive public art and design studio, Australia



**En Iwamura**  
Multi-disciplinary artist, Japan



**Kiki Ji**  
Floral installation artist, The Mainland



**Louis To Wun**  
Contemporary artist, Hong Kong



**Vivian Ho**  
Artist and illustrator, Hong Kong



**Zoe Siu**  
Knot designer, Hong Kong



## About Tsuen Wan

Tsuen Wan is an emerging destination for immersive travel, attributable to its multi-faceted characters evolved in an organic manner. It is where history meets creativity, intangible cultural heritages mixed with chic lifestyle, and vibrant cityscape immersed in natural scenery. Well connected externally by two rail lines and internally by a district-wide footbridge network, a day trip there cannot be easier.

Learn more about Tsuen Wan at [discoverhongkong.com](https://discoverhongkong.com)

## About Sha Tau Kok

Sha Tau Kok is a township in the northeastern-most part of Hong Kong adjacent to the Mainland. It has been a Frontier Closed Area with restricted access for decades, but when it was progressively opened up for tourism in recent years, many visitors have been immediately attracted by the lesser-known history, culture and natural elements there. Apart from its unique attractions, Sha Tau Kok is also where tourists may easily access to the stunning nearby islands and villages, such as Lai Chi Wo, Kat O, Ap Chau and Hong Kong UNESCO Global Geopark, by water-borne transport.

Learn more about Sha Tau Kok at [discoverhongkong.com](https://discoverhongkong.com)

## About Design District Hong Kong #ddHK design district Hong Kong 設計埠香港地

Design District Hong Kong (#ddHK) is a creative tourism project that celebrates authentic culture and creativity and livens up unique neighbourhoods in Hong Kong through design elements. Launched in 2018, #ddHK has transformed different neighbourhoods into new tourism destinations filled with characteristics, and has become a well-acclaimed creative cultural tourism project. A brand new #ddHK event themed "Creative Journey · Infinite Discovery" will be held from December 2024 to February 2025, leading visitors from around the world to immerse themselves into two diverse, distinctive and captivating neighbourhoods, Tsuen Wan and Sha Tau Kok. Creative elements will also be injected to highlight the unique charm of the two places.

Stay tuned for activity announcements and registration

[www.designdistrict.hk/en](http://www.designdistrict.hk/en) DesignDistrictHK DesignDistricthk\_ddHK